

Swanage Railway 1960's Event.

The Swanage Railway held a 1960's event over the weekend of 25th/26th November. Although the weather could have been more favourable the event was heralded to have been a success with good passenger loadings on both days.

Both Standard Class 4MT Tanks were in service supported by the Class 20 D8188 and the 3-Car DMU.

An intensive service was run with trains crossing at both Corfe Castle and Harmans Cross.

Although not yet open, a footbridge has now been installed at Corfe Castle Station and it is expected to be officially opened early in the New Year.



**Standard 4MT Tank at Corfe Castle
viewed from the rear of the DMU**

Editors Note.

If any member has an item (or advertisement) for inclusion in the newsletter, then please contact Roger Marsh on 01935 814367 or email jillrog@tiscali.co.uk

Forthcoming Raitours

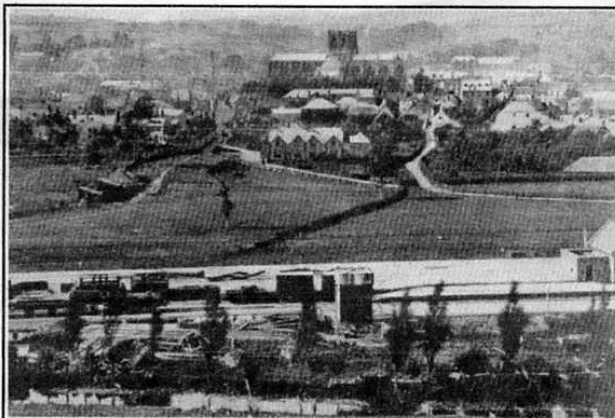
Thur. 14 Dec. 'Cathedrals Express'
London Victoria to Sherborne return. - 71000
Duke of Gloucester.

Sat. 23 Dec. 'Weymouth Circular Tour'
London Waterloo to Weymouth return. -
(Blue Pullman) 2 X 47 (FMR) (Top & Tail)
Hertfordshire Rail Tours.

Historical Picture of Sherborne Station.

The picture below was taken from the slopes above Sherborne Station in 1860 just days before the railway was officially opened. The location is immediately recognisable by the Abbey Church, but also notice the station building itself, which is still standing today (although somewhat modified!). The train to the left of the station is a works train no doubt making good the area in preparation for the official opening on the 7th. May 1860.

The first train was reported in the local press thus "At length the expected train hove in sight, and was greeted with a long and rapturous cheer; the Yeovil Band played the National Anthem at the Station. It consisted of eight new carriages, drawn by the 'Frome' Engine, gaily decorated with flags and flowers. (Remember Driver Hicks and his escapades with the 'Frome' Engine in last months newsletter!).



WELCOME!

It has been good to see that some new members have joined the club (well, some new and some not so new!).

Welcome to you all and the committee hopes that you enjoy the programmes in the coming months.

MEETING DIARY

Tues. 5th. Dec. 'Christmas Buffet and Quiz'.
Tues. 2nd. Jan. 'Here, There and Almost Everywhere'
An illustrated talk by John Chalcraft.